

Action code: **WHEN CONVENIENT**

Multiway Valve Overhaul Programme

FIVA, ELFI and ELVA

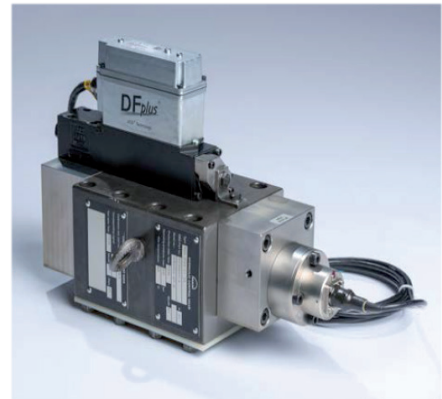
SL2017-646/TAF
April 2017

Concerns

Owners and operators of MAN B&W two-stroke marine diesel engines.
Type: ME-GI, ME/ME-C, ME-B, ME-S and ME-GI-S

Summary

A new overhaul programme for multiway valves (FIVA, ELFI and ELVA) replaces all multiway valve overhaul services offered earlier. The overhaul is offered as factory overhaul and on-board overhaul depending on the valve type.



Dear Sirs

MAN Diesel & Turbo introduces a new overhaul programme for multiway valves in continuation of our hydraulic pump overhaul programme.

With the increasing number of ME, ME-B and ME-C engines in service, there is a need for customer-friendly and tailor-made solutions suited for all ME engines.

The aim of this service letter is to inform our customers that we now offer an alternative to buying new multiway valves when the original valves are due for overhaul. Overhaul and calibration of the valve is carried out by MAN Diesel & Turbo.

This overhaul programme replaces all multiway valve overhaul services offered earlier (covering FIVA, ELFI and ELVA type valves). The new concept contributes to reduced maintenance costs and increased overall reliability of the main engine.

Based on service experience the multiway valves will be due for overhaul after 32,000 running hours, or equivalently five years in service. With planned maintenance in mind, multiway valve overhaul can be carried out during dock stay together with hydraulic power supply pump overhaul.

Please note: In cases, where the valve has suffered damage due to impurities in the oil, improper storage, physical damages or similar, the valves may be found beyond repair.

For further information, please contact:
HydraulicService-CPH@mandieselturbo.com

Yours faithfully,



Michael Petersen
Vice President
PrimeServ, Two-Stroke



Henrik Birkegård
Senior Manager
Technical Service & Academy

Head office (& postal address)
MAN Diesel & Turbo
Teglhølmegade 41
2450 Copenhagen SV
Denmark
Phone: +45 33 85 11 00
Fax: +45 33 85 10 30
info-cph@mandieselturbo.com
www.mandieselturbo.com

PrimeServ
Teglhølmegade 41
2450 Copenhagen SV
Denmark
Phone: +45 33 85 11 00
Fax: +45 33 85 10 49
PrimeServ-cph@mandieselturbo.com

Production
Teglhølmegade 35
2450 Copenhagen SV
Denmark
Phone: +45 33 85 11 00
Fax: +45 33 85 10 17
manufacturing-dk@mandieselturbo.com

Forwarding & Receiving
Teglhølmegade 35
2450 Copenhagen SV
Denmark
Phone: +45 33 85 11 00
Fax: +45 33 85 10 16
shipping-cph@mandieselturbo.com

MAN Diesel & Turbo
Branch of MAN Diesel & Turbo SE,
Germany
CVR No.: 31611792
Head office: Teglhølmegade 41
2450 Copenhagen SV, Denmark
German Reg.No.: HRB 22056
Amtsgericht Augsburg

The overhaul will be offered as a factory overhaul and on-board overhaul depending on the valve type.

Factory overhaul:

Cleaning, dismantling, visual inspection, exchange of all relevant parts and a full scale test where service is simulated in a test rig, followed by a report.

On-board overhaul:

Cleaning, dismantling, visual inspection, exchange of all relevant parts and a function test where the valve is mounted on the engine, followed by a report.

To help you determine which types of valves you have on board your vessels, we have pictured the various valve models in Figs. 1- 7.

Multiway valve types:

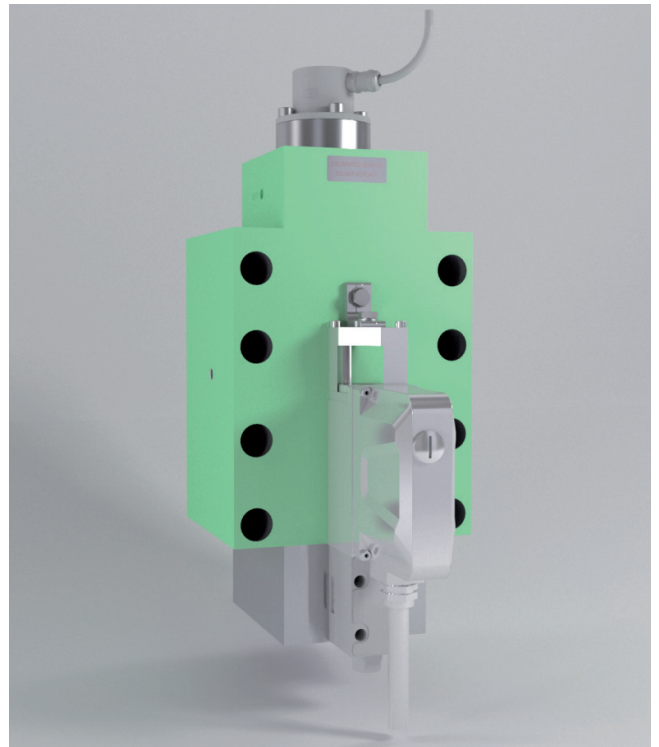


Fig. 2: MAN Diesel & Turbo FIVA I and II with Parker proportional valve

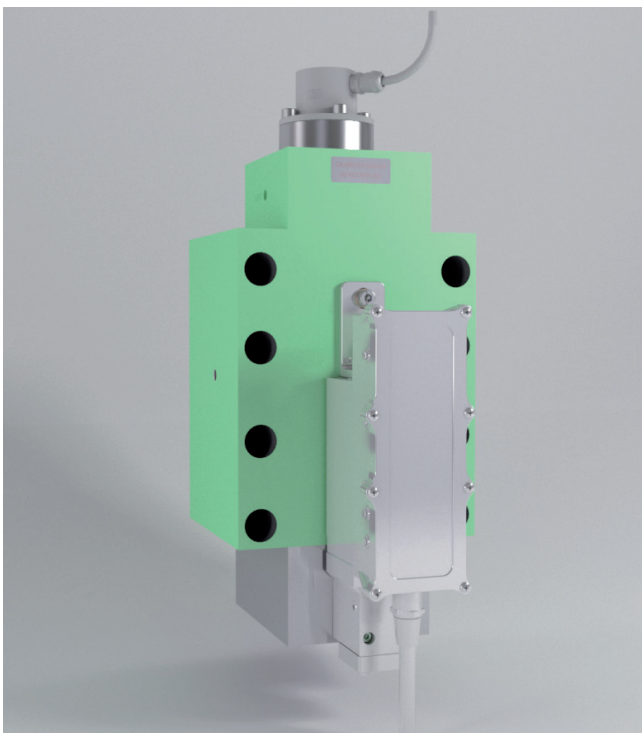


Fig. 1: Nabtesco FIVA

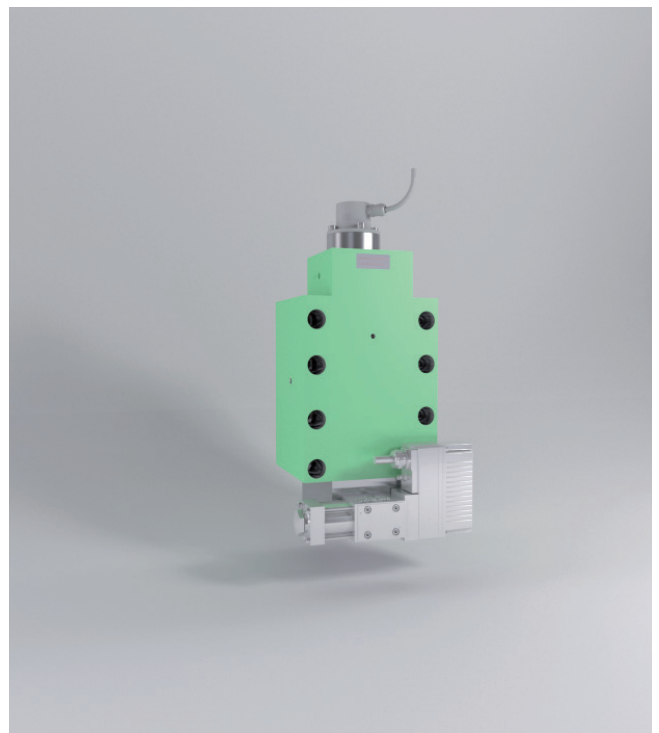


Fig. 3: MAN Diesel & Turbo FIVA I and II with Moog proportional valve

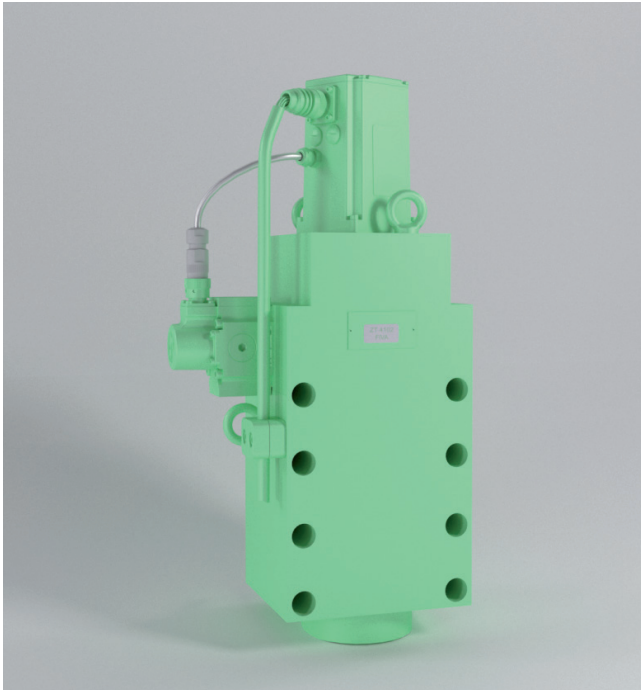


Fig. 4: Bosch FIVA

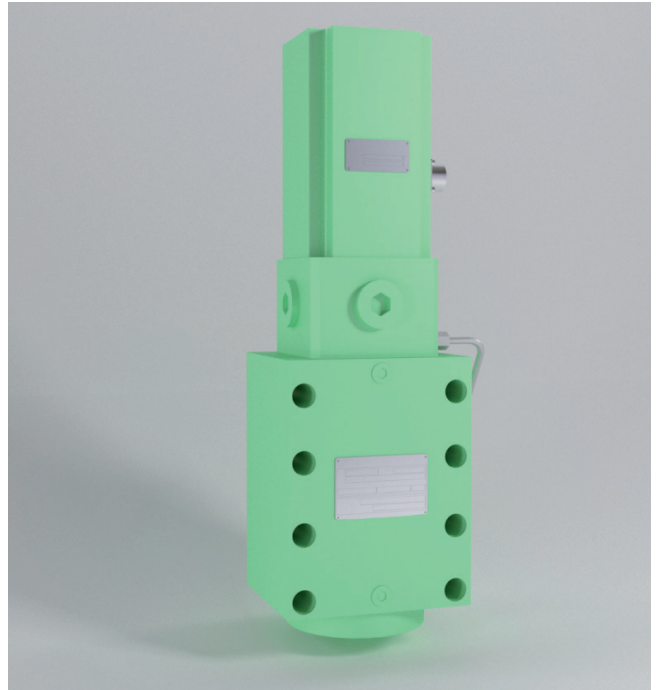


Fig. 5: Curtis Wright FIVA

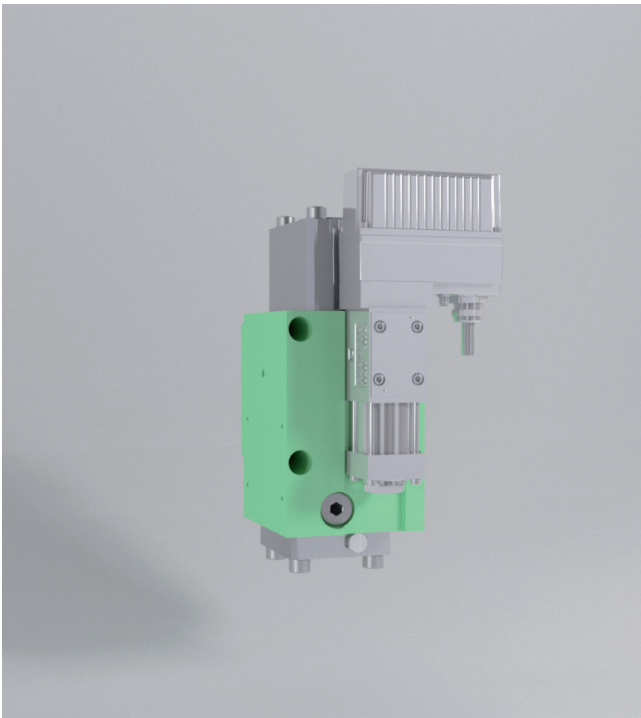


Fig. 6: ELFI/ELVA valve with Moog proportional valve

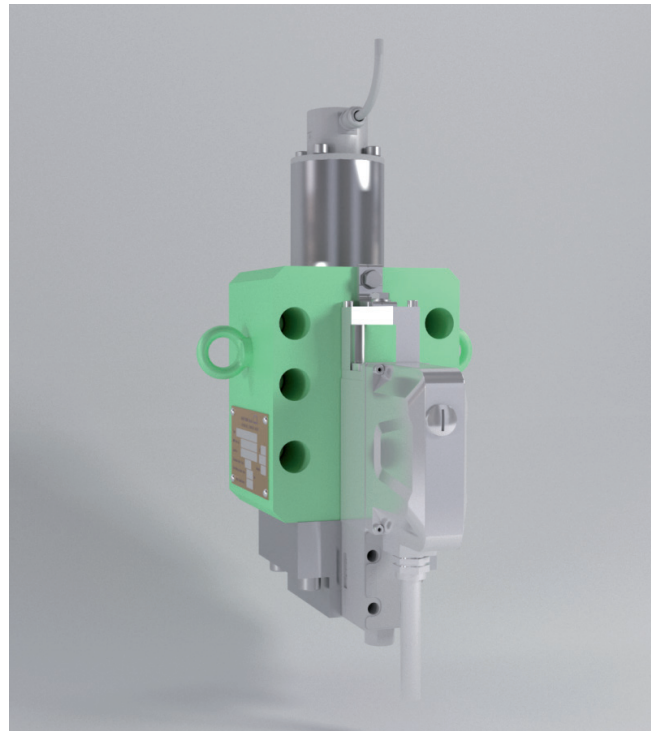


Fig. 7: ELFI/ELVA valve with Parker proportional valve